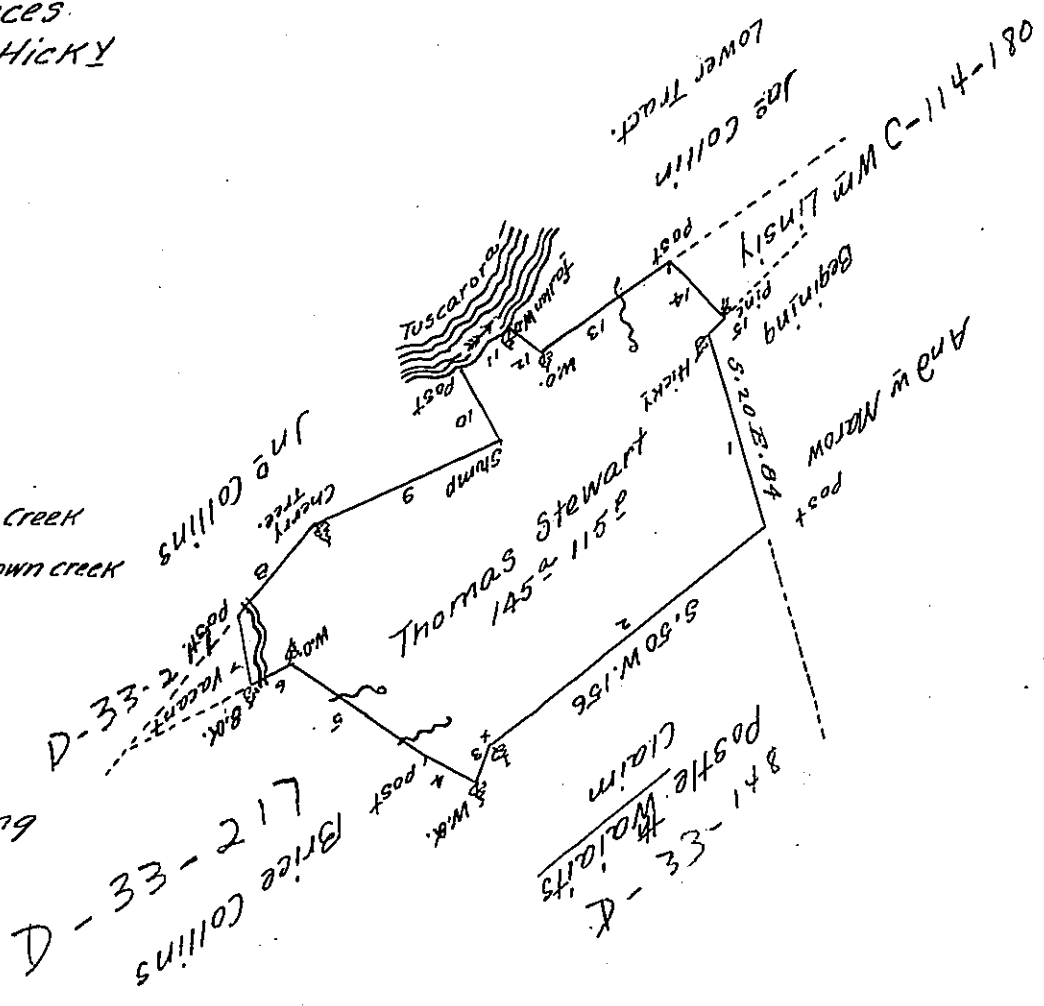


*Courses & Distances
Begining at a HickY*

- 1. S. 20 E. 84
 - 2. S. 50 W. 156
 - 3. S. 25 W. 15 1/2
 - 4. N. 63 1/2 W. 24
 - 5. N. 59 W. 70
 - 6. S. 59 W. 13
 - 7. N. 19 W. 27
 - 8. N. 38 E. 49
 - 9. N. 62 1/2 E. 87
 - 10. N. 39 1/2 W. 28 T. Creek
 - 11. N. 50 E. 29 Down creek
 - 12. S. 47 E. 16
 - 13. N. 53 1/2 E. 71
 - 14. S. 42 1/2 E. 32
 - 15. S. 35 W. 6 to
- a HickY the begining



*A Draught of a Tract of Land situate in Milford Township -
Mifflin County Containing One hundred and forty five acres & 115
perches and the allowance of Six P. Cent for Roads &c Survey^d for
Thomas Stewart the 6th of May 1799 in persuance of a Warrant Dat-
ed the 5th Day of January 1796.*

William Harris, D.S.

*To Daniel Brodhead, Esq^r.
Surveyor Gen^l Pennsylvania.*

*IN TESTIMONY that the above is a copy of the original remaining on file in
the Department of Internal Affairs of Pennsylvania, made
conformably to an Act of Assembly approved the 16th day of
February, 1833, I have hereunto set my Hand and caused
the Seal of said Department to be affixed at Harrisburg,
this twenty second day of January 1907*

*Isaac P. Brown
Secretary of Internal Affairs.*